

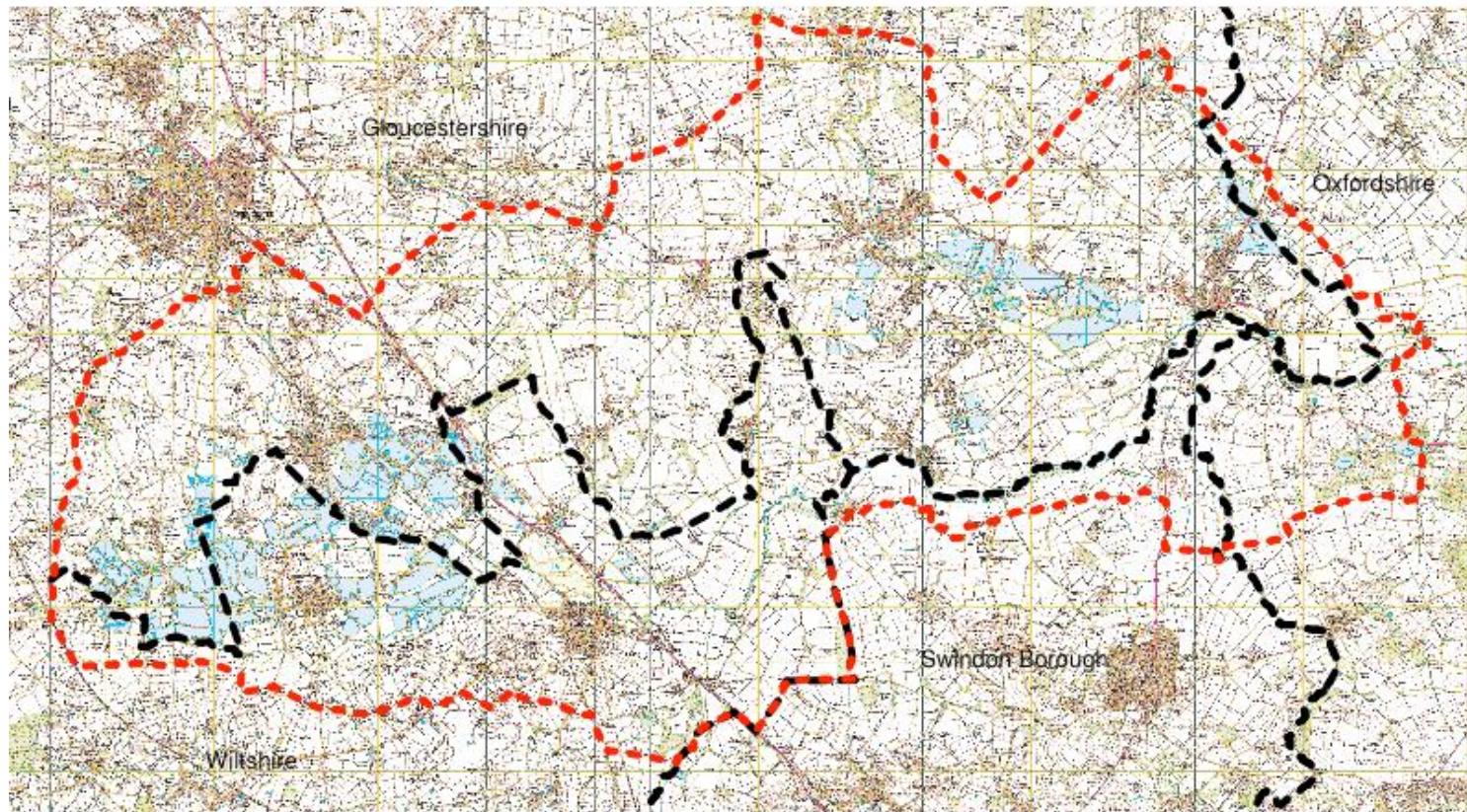
THE HEAD OF THE THAMES



An application by the
Cotswold Water Park Trust
to the Heritage Lottery Fund

The Head of the Thames Landscape: The Cotswold Water Park

The Cotswold Water Park Biodiversity Action Plan Vision: The Head of the Thames Project Boundary



Head of the Thames Project Boundary - - - - -

County Boundary - - - - -

Why does the Cotswold Water Park need a Heritage Lottery Fund Landscape Project now?

- The **Masterplan** produced for the Water Park in 2008 was a major step forward in producing a strategic vision for the area but the plan **highlights the significant funds that are required to deliver this vision.**
- The **Integrated Landscape Character Assessment** (2009) suggests particular actions required to achieve a 'sense of place' – these require coherent commitment
- Despite the creation of the CWP Joint Committee in 1969 , the CWP Society in 1996 and the significant progress that has been made, **there is a need to accelerate the rate of delivery.**
- There is an increasing recognition that **true partnership working** in the Water Park can achieve by **involving local communities and businesses** in specific and deliverable projects.
- The Cotswold Water Park Society and more recently the Trust have been extremely successful in fundraising on a small to medium scale; it is now time to expand on this success to include **large scale lottery funded projects that will bring significant benefits to the area.**

What is the Landscape Vision?

What do we want to achieve?

- **A landscape partnership** in which private and public sector work together in the Water Park to deliver a 'sense of place'
- **A coherent landscape** with the identity of the Water Park more clearly defined
- **An accessible landscape** in which foot and cycle paths link local communities and also provide interest for sustainable tourism
- **A sustainable landscape** that is grazed to enhance conservation whilst providing a special brand of meat for local retailers, communities and tourists
- **A landscape economy** in which farmers generate revenue through conservation, visitors benefit from enhanced access to the landscape, and local businesses and people benefit from visitor spend.
- **A unique landscape**, creating one of the largest man made freshwater complexes in Europe, resilient to weather extremes produced by climate change
- **A wetland landscape** storing floodwater and acting as a refuge in times of drought
- **A continuous landscape** of fourteen miles of connected wetland, grassland and other habitats
- **An 'understood' landscape**, appreciated and managed through the skills and participation of an involved community
- **A creative landscape** that celebrates key species, addresses issues imaginatively, and draws on the powers of its artists, composers and poets to bring together its communities

Our delivery themes

- **Sustainable approach to land management** working in partnership with landowners, parish and town councils, voluntary groups
- **Partnership working with mineral companies and private developers** to achieve nature restoration for reedbed, floodplain grassland and wet woodland
- **Coherent strategy with planning authorities** to achieve best post mineral nature restoration practice on the ground
- Development of **flagship nature reserves** as biodiversity rich hotspots
- Working with local communities in a creative way to raise **awareness and understanding of the landscape** and involvement with conservation of wildlife
- Raising the quality and range of **traditional local skills** such as hedge laying, and developing new heritage skills such as monitoring wildlife and managing traditional grazing herds
- **Raising the profile and understanding of the area** by developing a clearer identity/brand



Our delivery projects

- **Establish a grazing project** in partnership with landowners and farmers
- **Provide ecological advice** into minerals extraction and restoration plans to assist minerals companies in delivering biodiversity gain.
- **Link identified foot and cycle ways** and providing coherent signage across whole landscape
- **Providing interpretation and information hubs** especially on archeology and history of CWP through community involvement
- **Enhancing flagship nature sites** – North Meadow, Cleveland Lakes, Riverside Park with quality habitat and improved access programmes
- Developing a **Landscapes for Bats project**
- **Developing a Remote Sensing Project** to gather baseline information on the area's ecology
- Improved hedgerow and other boundary habitat maintenance through access to a **chipping scheme**
- Develop a **Volunteer Wardens Scheme** for the CWP
- Formal **training schemes for traditional conservation skills** including hedge laying, wildlife monitoring and surveying
- **Creative engagement in the landscape** through community art initiatives such as the willow lantern pageant, commissioning iconic landforms such as Ammonite Pools to help put the CWP 'on the map', and celebrating, through song and sound, the inspiration and legacy of the most significant local artist Ralph Vaughan Williams



Who are the partners?

- The **Water Park's communities** who use the park for their life and work, whose histories go back 6,000 years, and those who represent them today including Parish Councils
- **Local businesses, entrepreneurs and developers** who have invested in the Water Park
- **Voluntary organisations** who work in the park and bring added value including the RSPB, the Canals Trusts, Sustrans, FWAG, the Wildlife Trusts
- **Mineral and gravel extractors** who will be working in the park for at least another 40 years
- **Landowners and farmers** whose economic wellbeing is dependent on a sustainable landscape
- Other **National Agencies** such as Natural England and Environment Agency
- **Academic centres** such as the Royal Agricultural College Cirencester
- **Local Authorities** through the Cotswold Water Park Joint Committee



HLF Delivery Programmes

PROGRAMME A:

Conserving & restoring the natural features that create the historic landscape character



- Locally led **grazing scheme** managing land for biodiversity (with development)
- Locally led **cooperative chipping scheme** managing boundaries to restore landscape character (with development)
- **Landscapes for Bats** - enhancing habitat for landscape character creating and restoration of bat roosts and bat habitat features (with development phase)
- **Flagship nature reserves** for biodiversity rich exemplars including uniquely designed iconic landscape post mineral restoration at Cleveland Lakes for enhanced biodiversity

HLF Delivery Programmes

PROGRAMME B:

Increasing community participation in local heritage



- Improving the quality of the support for existing volunteers and involving more volunteers through the establishment of a **CWP Volunteers Wardens scheme**
- Recording and **displaying evidence of the dramatic long term changes in the CWP landscape** with public 'time- line' 'road show' of geological and archeological interest for the community
- **Enhance community celebrations** of the landscape, history and biodiversity of the CWP
- **Creative community engagement** with artists and poets perceptions of the CWP landscape : homage to the legacy & compositions of Ralph Vaughan Williams, through community song and artists sound projects

HLF Delivery Programmes

PROGRAMME C:

Access to and learning about the landscape and its heritage



- A local delivery partnership to **improve and enhance foot and cycle path linkages** across the landscape especially for people with disabilities
- Locally agreed and delivered strategy for **improved signage**
- Locally agreed **access interpretation and information plan** that reduces clutter in the landscape by using digital and other technologies, and is partnership delivered
- Support for **farmers 'open days'** to help access and understand the grazing project
- Landscape history and change: **series of walks, talks and events** especially for schools
- **Access and Community Outreach Officer Post**

HLF Delivery Programmes

PROGRAMME D:

Increasing training opportunities in local heritage skills



- **Post mineral extraction nature restoration officer** to develop coherent strategy for landscape restoration and to enhance skills in mineral companies, planning authorities and amongst landowners as to how to create the best quality habitat
- **Establish data sensing techniques** to input baseline data to ensure knowledge and statistics about CWP biodiversity can be shared and disseminated
- **Training in biodiversity species surveying** and monitoring for volunteers
- **Training and workshops for heritage skills** such as hedge-laying and flood plain and heritage grazing herd management- for volunteers and young trainees
- **Accreditation for training skills** through cooperation with Royal Agricultural College

Who will lead this project?

- The **Cotswold Water Park Trust** will be the lead applicant , it will manage the project and claim back funding from the HLF
- The **Cotswold Water Park Trust** is a charity set up in 2005 by the Cotswold Water Park Society and has been operating since 2007
- The CWP Trust will take over all activities from the **Cotswold Water Park Society** in April 2011 . The Society will become a subsidiary of the Trust



How can partners be involved?



- **Support us** - send us a letter of support from your organisation
- **Get involved** - participate in the project development phase
- **Support delivery** –through becoming a full partner; help provide match funding, participation on the Partnership Board, give time and advice ‘in kind’